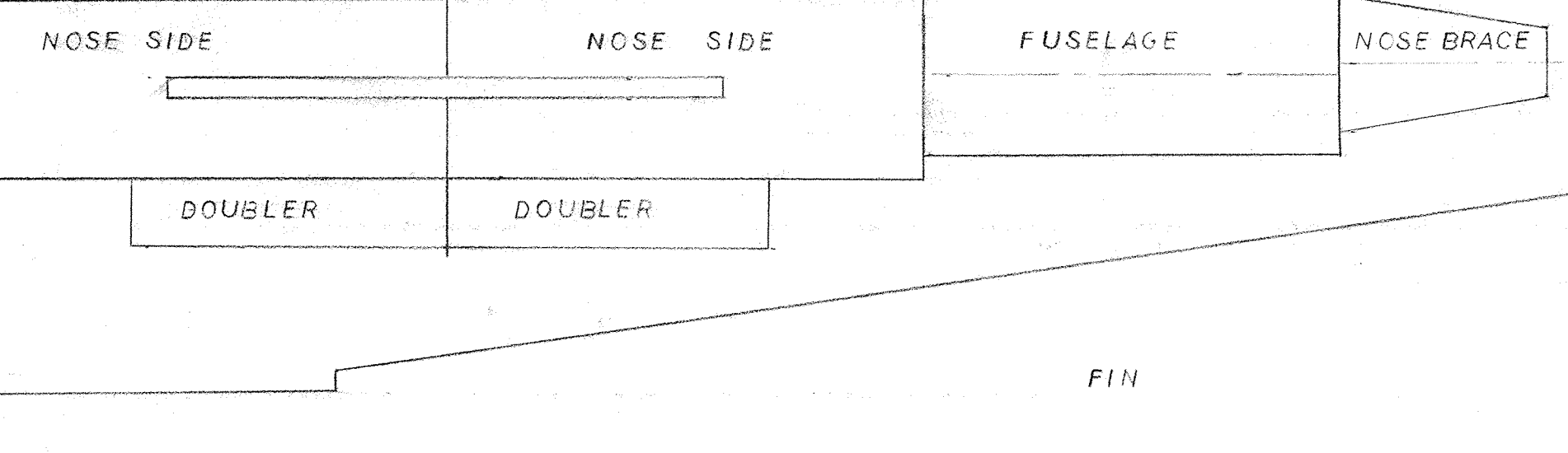


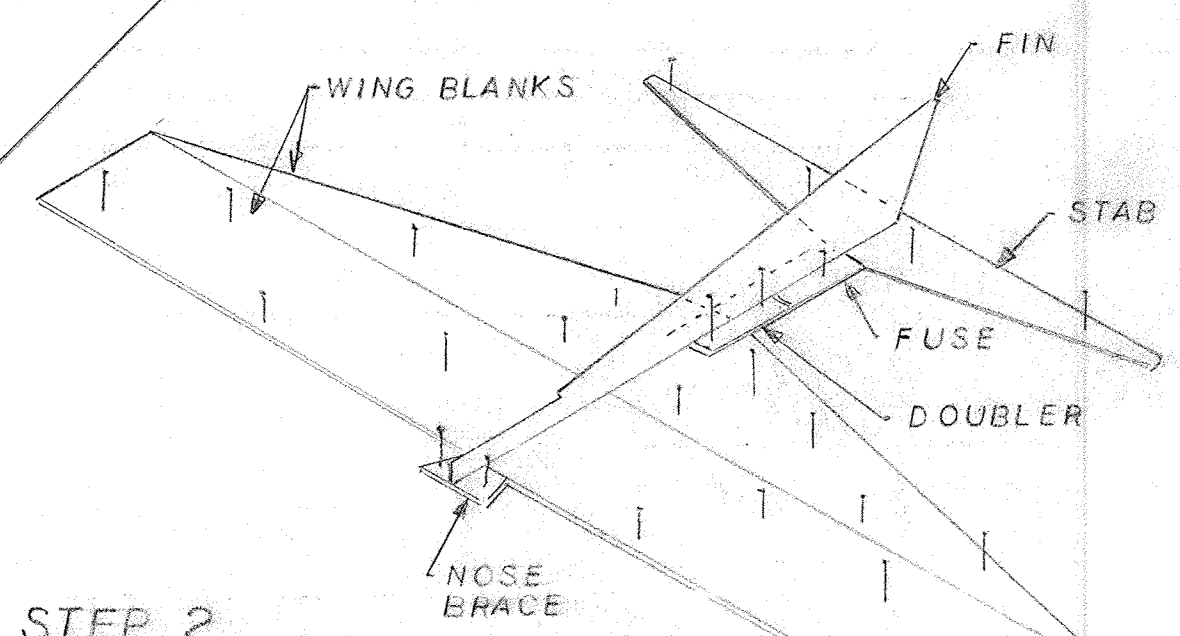
1/8 X 3 BALSA FULL SIZE PARTS LAYOUT

ELEVATOR

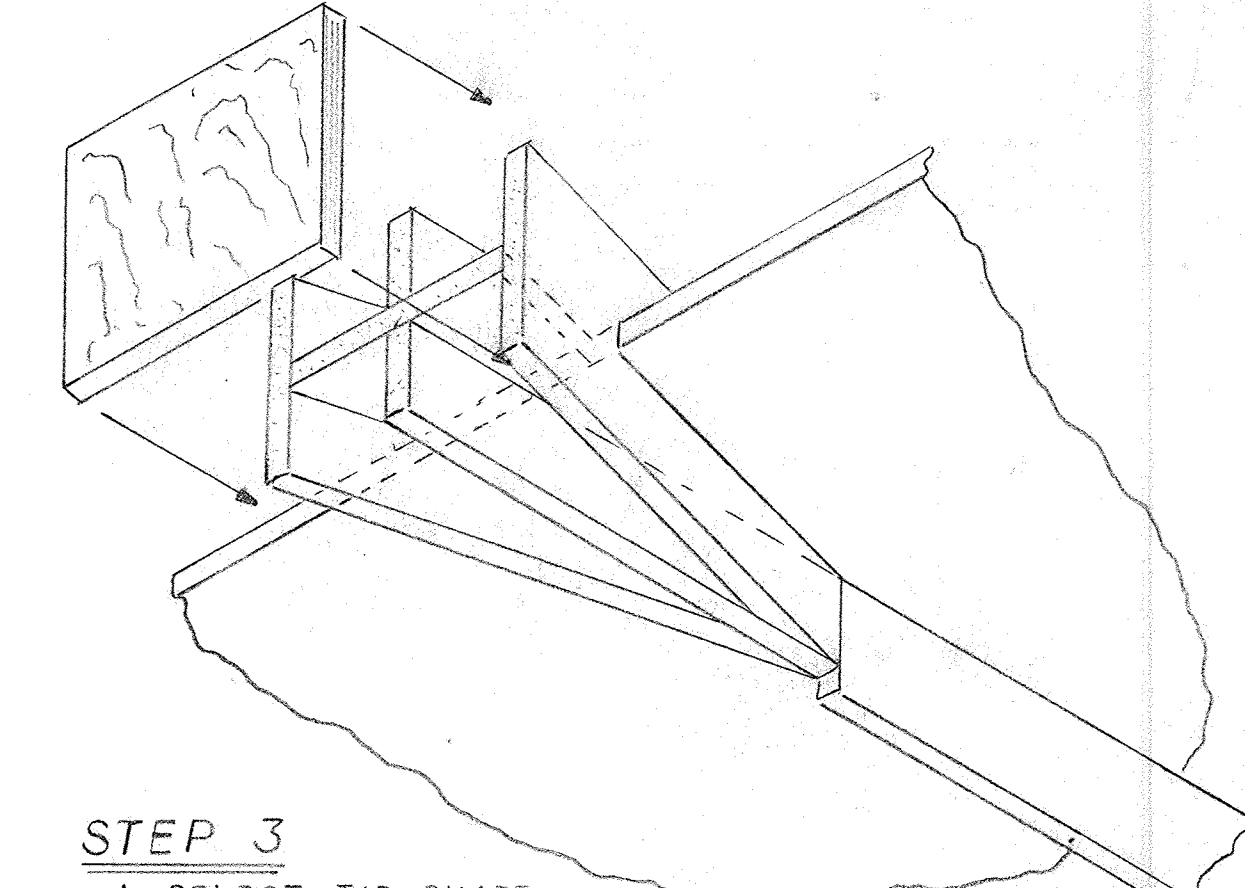
MARK C/L ON PART



STEP 1
PIN PARTS SHOWN OVER PLANS AND GLUE. PROTECT PLAN WITH WAX PAPER, OR PLASTIC WRAP.



STEP 2
1. GLUE ON LOWER FUSELAGE.
2. GLUE ON NOSE SIDES.
3. SAND SIDE EDGES SQUARE WITH NOSE. (SANDING BLOCK)
4. EPOXY FIREWALL IN PLACE.
5. FIT AND GLUE NOSE TOP AND BOTTOM.
6. SAND ROUNDED EDGES AND GLUE TAPE OVER CORNERS OF FIREWALL.



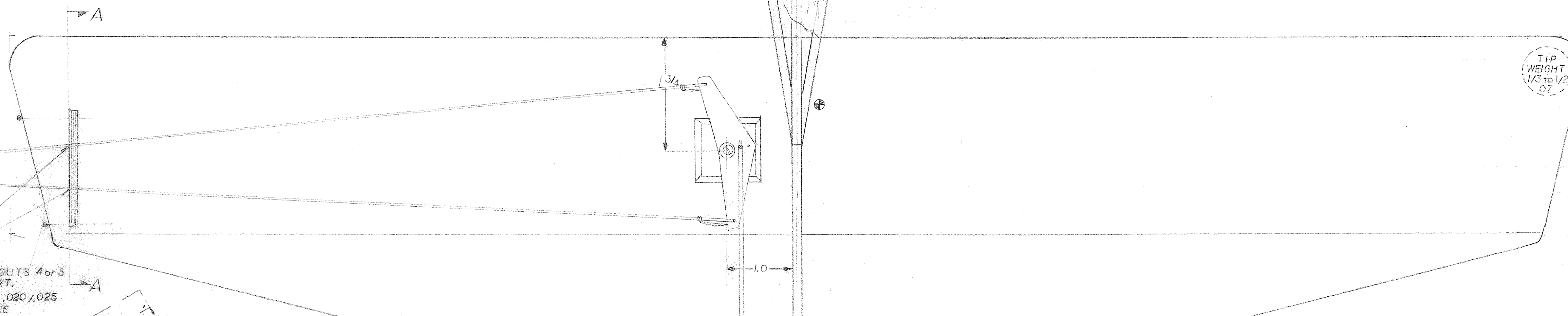
STEP 3
1. SELECT TIP SHAPE YOU LIKE AND CUT OUT
2. INSTALL ELEVATOR
3. SAND ALL EDGES TO ROUNDED COUNTOUR AND SAND MODEL SMOOTH.

STEP 4
1. CUT LINE GUIDE SLOT. GLUE ON TIP WEIGHT WITH EPOXY OR CYANOACRYLATE.
2. GLUE ON BELLCRANK PLATFORM AND CONTROL HORN BASE.

STEP 5
PAINT AIRPLANE TO SUIT. NOT TOO MUCH PAINT!! FINAL WEIGHT SHOULD BE AROUND 6 OUNCES.

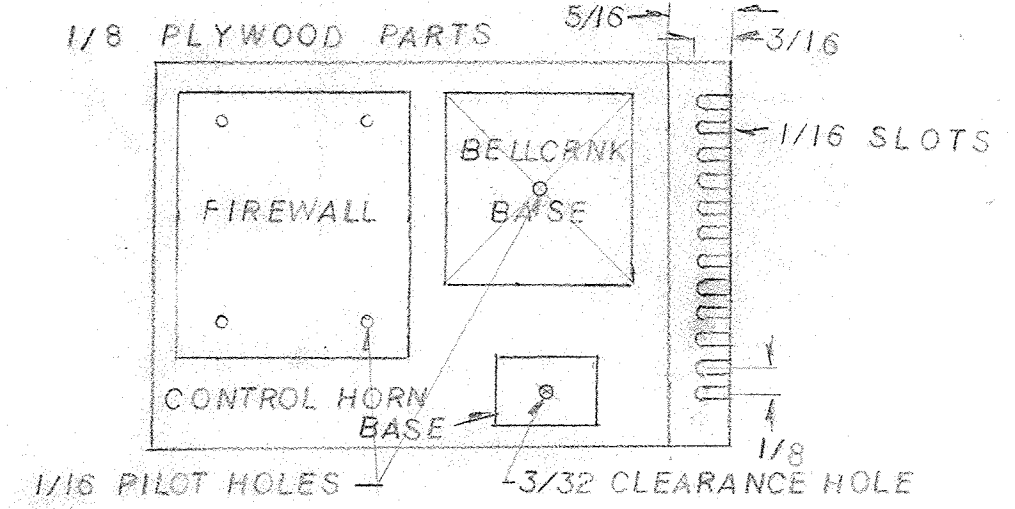
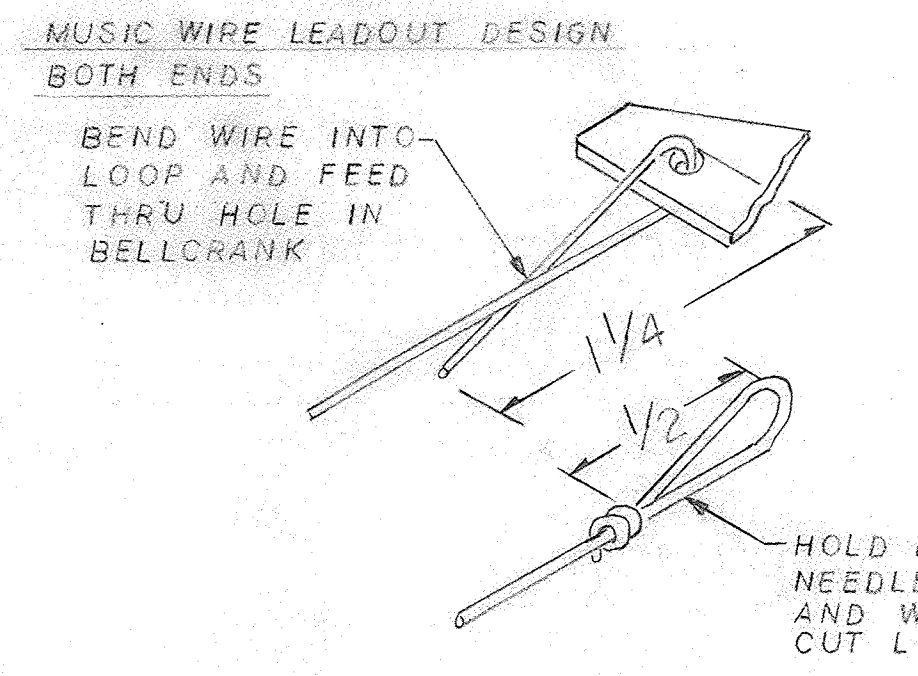
STEP 6
INSTALL CONTROLS. ADJUST PUSHROD LENGTH FOR EQUAL UP AND DOWN TRAVEL. START FLYING WITH PUSHROD IN HOLES SHOWN ON PLAN.

STEP 7
USE ENGINE TO LOCATE MOUNTING HOLES. DRILL 4ea 1/16 DIA PILOT HOLES. RUN #2 or #3 x 3/8 LONG SELF-TAPPING SCREW INTO HOLES AND REMOVE. SQUEEZE GLUE INTO HOLES AND TIGHTEN ENGINE IN PLACE.

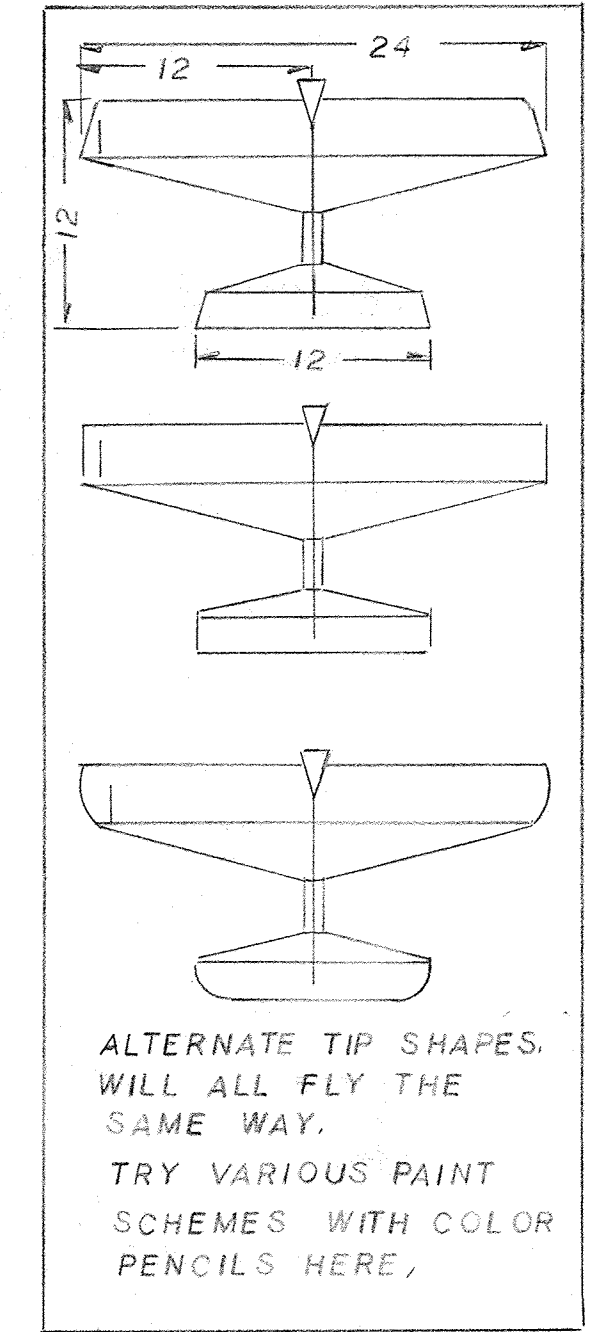


SECTION A-A
1. PLACE LINE GUIDE IN SLOT.
2. PUSH PINS INTO TIP TO MARK GUIDE.
3. DRILL PIN HOLES TO 1/32 DIA.
4. GLUE FRONT PIN FOR BEARING.
5. PULL REAR PIN TO RELEASE FOR LINE ADJUSTMENT.

ALTERNATE DESIGN.
1. LEADOUTS MADE FROM .018 LINE.
2. DRILL SERIES OF HOLES FOR ADJUSTMENT.



FLIGHT ADJUSTMENTS
CONTROLS - ADJUST BY PLACING PUSHROD IN VARIOUS BELL-CRANK AND HORN HOLES (4 COMBINATIONS). TRY 2" LINE SPACE AT HANDLE. ADJUST FOR CLEAN TURNS WITHOUT EXCESSIVE SLOWING DOWN. ADJUST LENGTH OF PUSHROD UNTIL TURNS ARE EQUAL IN BOTH DIRECTIONS.
LINE RAKE - USE LINE GUIDE POSITION THAT KEEPS LINES TIGHT OVERHEAD, WITHOUT CAUSING AIRPLANE TO SLOW IN LEVEL FLIGHT.



ALTERNATE TIP SHAPES. WILL ALL FLY THE SAME WAY. TRY VARIOUS PAINT SCHEMES WITH COLOR PENCILS HERE.

