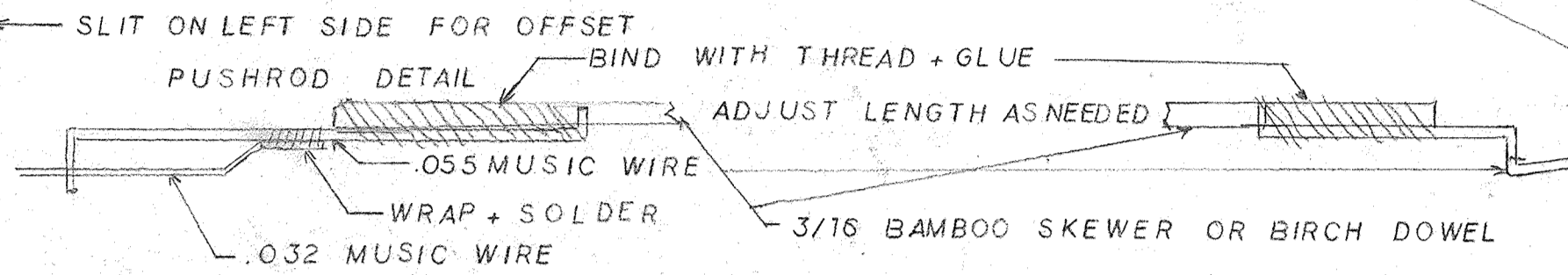


THIS EDGE OF STAB AND ELEVATOR NEEDS TO BE AS SQUARE AS POSSIBLE. CUT PATTERN STARTING FROM THIS EDGE. SAND TOP AND BOTTOM OF SHEET AS CLOSE TO VERTICAL WEB AS POSSIBLE.

DU-BRO 237 CONTROL HORN



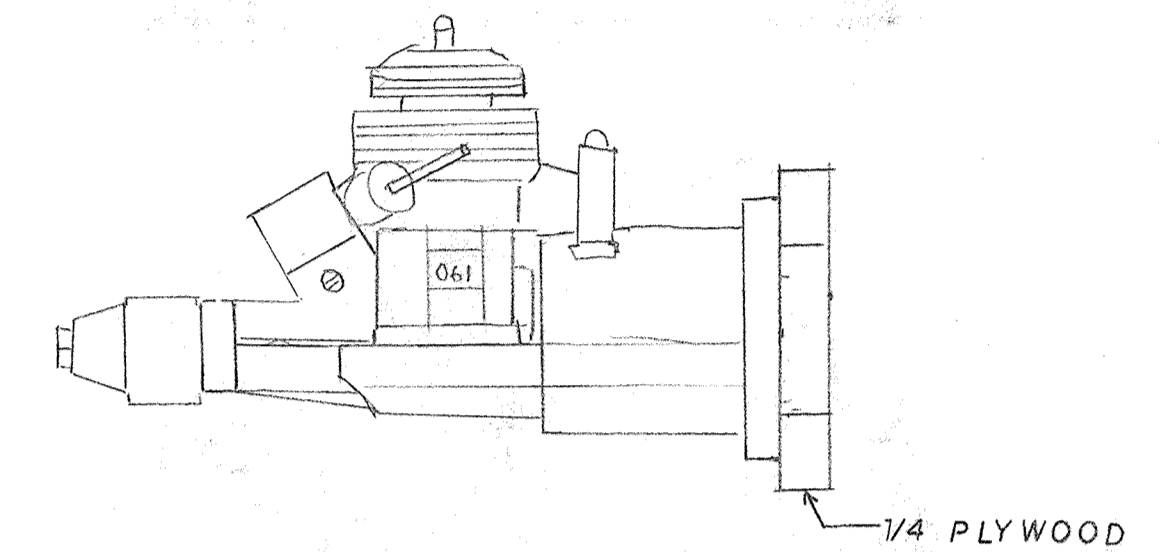
RUDDER 4mm COROPLAST

DRILL/TAP for 10-24x1/2 PAN HD. PLASTIC MS. (2 PLACES)

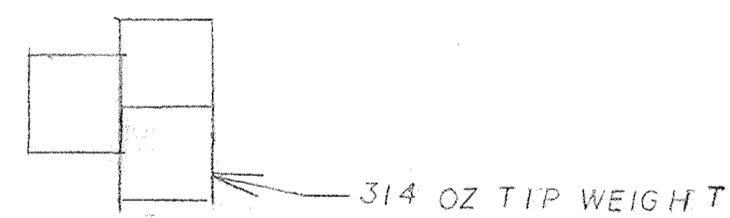
BAMBOO OR BIRCH DOWEL 1 1/2" LONG INSIDE COROPLAST TO PREVENT CRUSHING BY SCREWS (6 PLACES)

WING DOUBLER OUTLINE

RECOMMENDED ENGINE
NORVEL .061 BIG MIG + 6 x 3 PROP



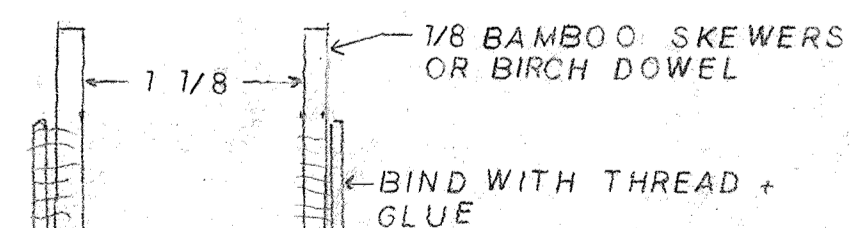
STARTING LOCATION FOR LEADOUTS



3/4 OZ TIP WEIGHT

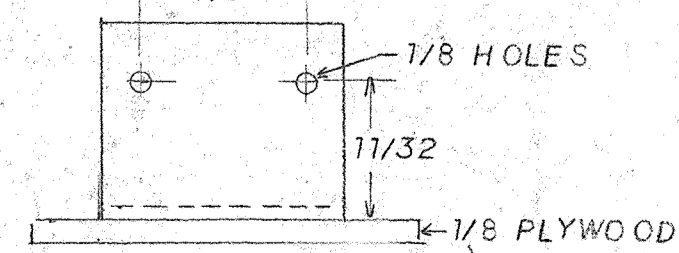
CANOPY 1/4" PINE LATH

LEADOUT GUIDE DETAIL



MOTOR MOUNT DETAIL

1/16x1 ALUMINUM ANGLE CUT 1 1/4



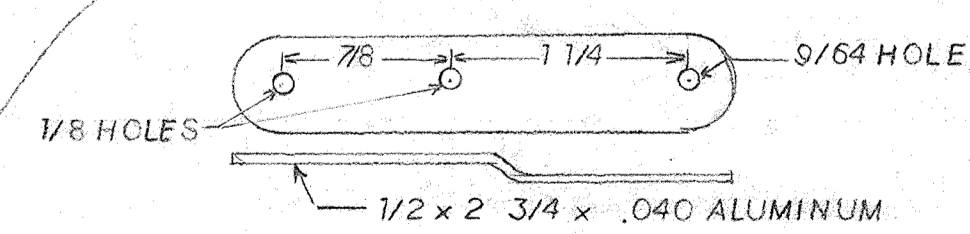
START WITH THIS LOOP BEND WIRE BACK 3/4" FORWARD. BEND ACROSS AND REPETE

1/32 MUSIC WIRE

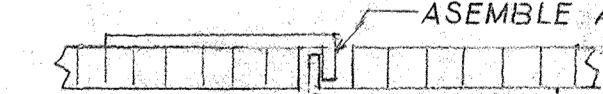
BIND AND SOLDER 2 PLACES

DRILL AND COUNTERSINK FOR 4-40x3/8 F.H. MS. (4 PLACES)

BELLCRANK MOUNT DETAIL

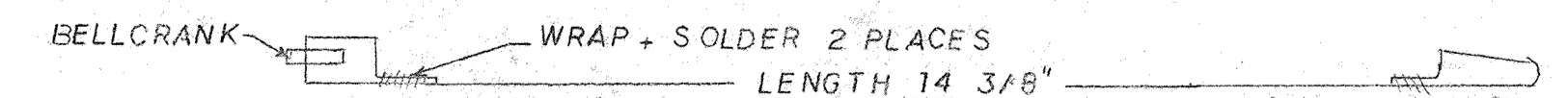


HINGE DETAIL



ASSEMBLE AS TIGHT AS POSSIBLE
EACH HINGE IS MADE FROM 2 PCS. 3/4 x 1 1/4 NYLON REINFORCED STRAPPING TAPE
CLEAN SURFACE WITH ALCOHOL OR PAINT PREP

LEADOUT DETAIL



FUSELAGE BASE

MOTOR MOUNT SPACER

BOTTOM REINFORCEMENT

DRILL 1/8" HOLE (5 PLACES)

FUSELAGE TOP 1/4" PINE LATH
FUSELAGE BASE 1/4" PINE LATH

MOTOR MOUNT SPACER 1/8" PLYWOOD
WING + STAB 4mm COROPLAST
WING DOUBLER 4mm COROPLAST

BOTTOM REINFORCEMENT 1/8" LITE PLY

NOTE: WING DOUBLER IS ATTACHED TO WING USING DOUBLE FACE ADHESIVE TAPE OR CONTACT CEMENT. CLEAN SURFACE WITH ALCOHOL OR PAINT PREP FIRST.

4-40 x 1 1/4 M.S. with nylon lock nut 5 PLACES

DRAWN BY
ART JOHNSON

DESIGNED BY
BOB ARATA

TOUGH BABY